



Port de Barcelona

Barcelona Cruise Facilities 2025



As we step into 2025, the Port of Barcelona continues to move forward with determination, reaffirming our long-standing commitment to sustainability and innovation. The Mediterranean remains a key destination for the cruise industry, and we are proud to be part of a sector that connects people and cultures from around the globe. Together with cruise lines, shipowners, and the entire port community, we approach this new season with enthusiasm and energy, ready to keep building a future defined by excellence and respect for our environment. Let's navigate this exciting journey together.

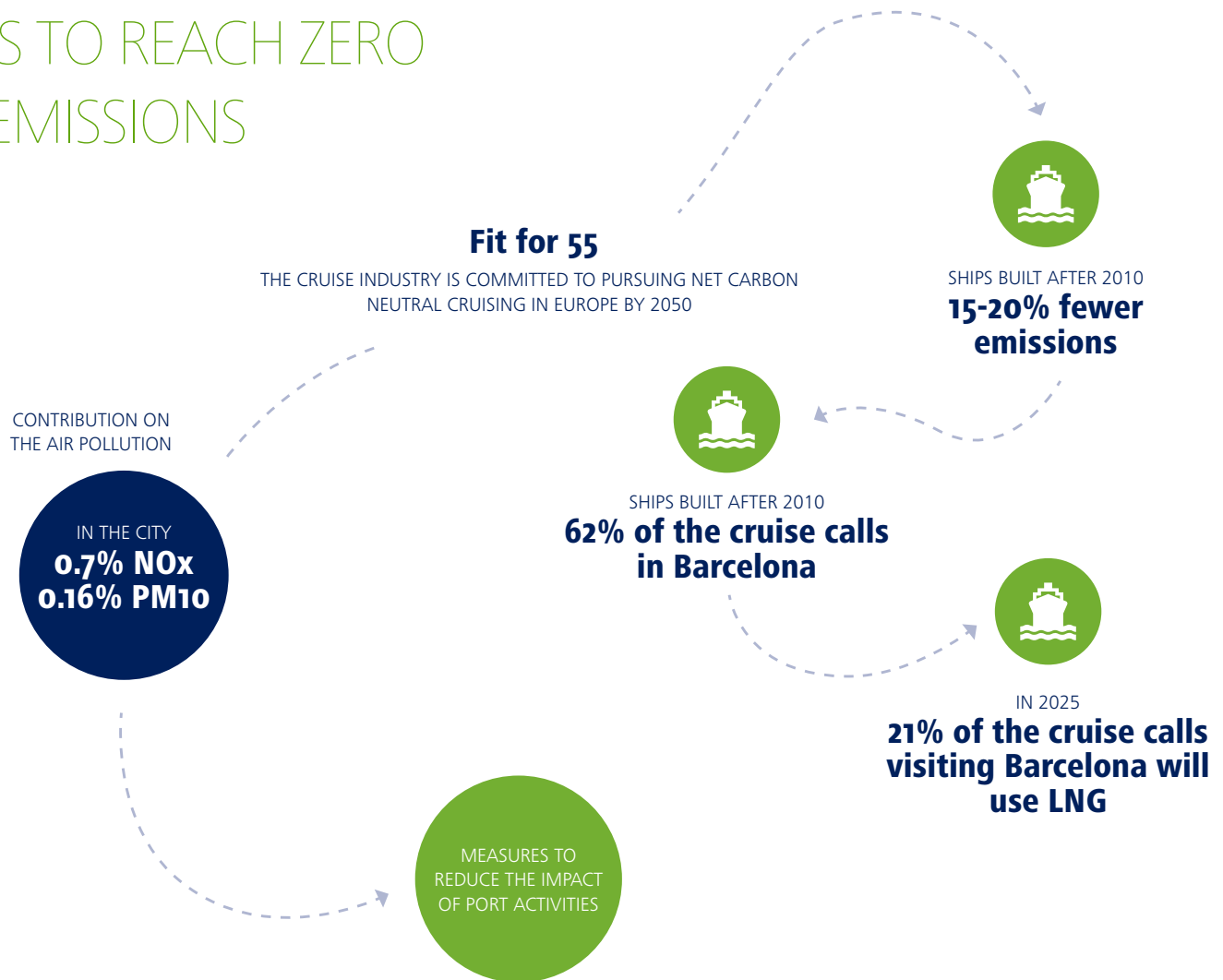




ENVIRONMENTAL SUSTAINABILITY

Barcelona welcomes
the most modern
and efficient ships

THE OBJECTIVE OF THE PORT OF BARCELONA IS TO REACH ZERO EMISSIONS



AIR QUALITY STUDY (BCN REGIONAL, 2019)



LNG MOBILITY:
SHIPS, TRUCKS, PORT EQUIPMENT



REBATES FOR
GREEN SHIPS



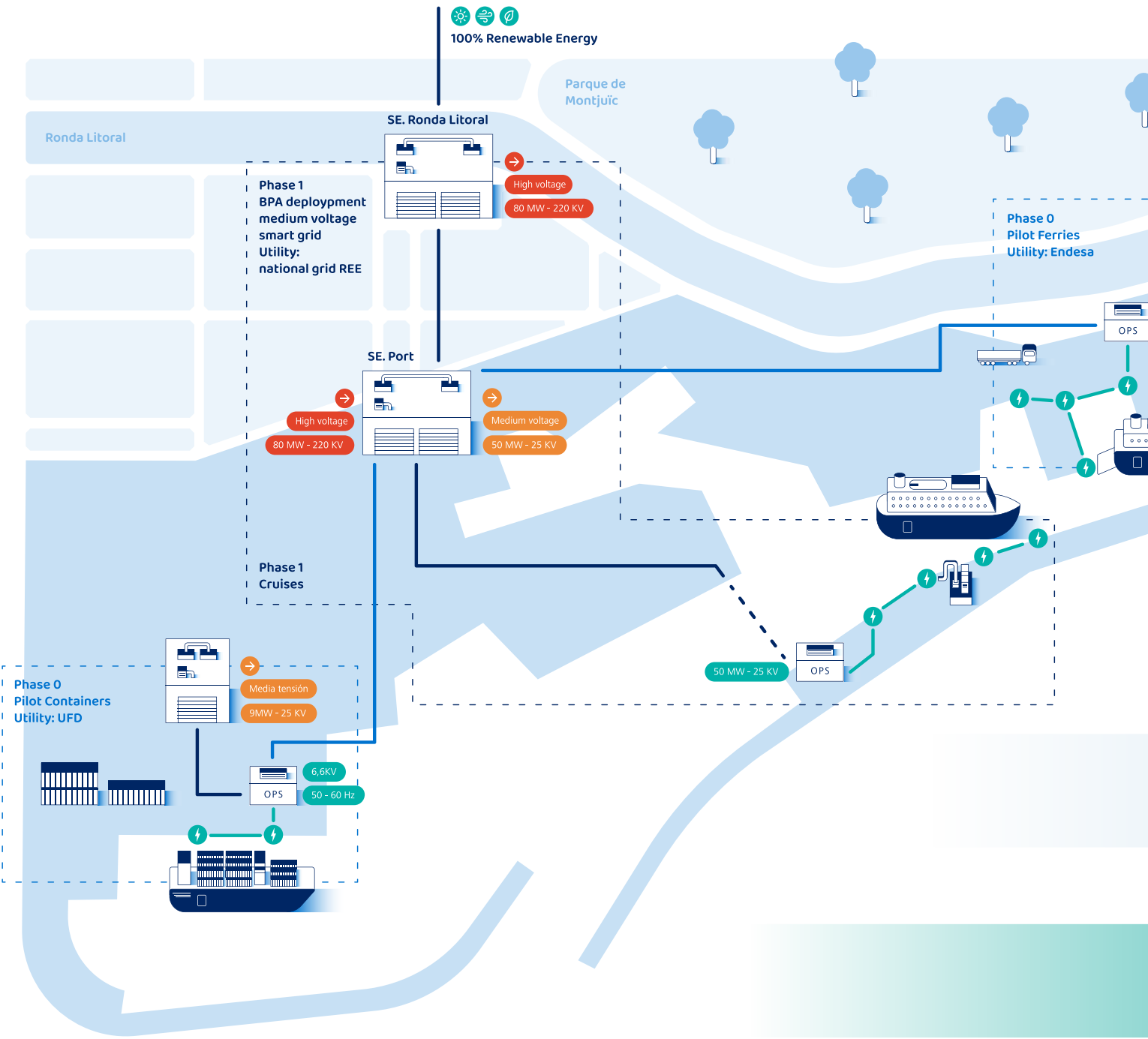
WATERFRONT
ELECTRIFICATION PROGRAM



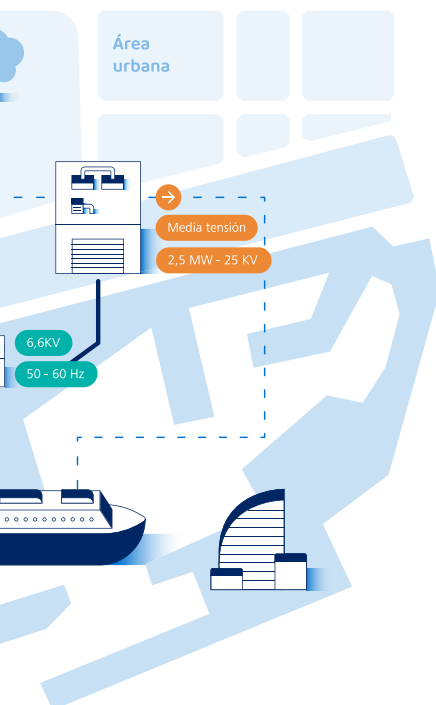
RENEWABLE ENERGY
PROGRAM SOLAR

nexigen

Electrification by Port de Barcelona



WE ARE WORKING JOINTLY WITH CRUISE LINES TO ENSURE THE PROJECT IS ALIGNED WITH ALL PARTIES.



The electrification of piers is a key Project in the Port of Barcelona's energy transition plan. With OPS we will be able to connect ships to an smart grid providing electricity from renewable sources. Ships will be able to turn off their engines while at port.

WITH OPS
WE WILL REDUCE

38%
T NOx/CALL

42%
T PM₁₀/CALL

42%
T PM_{2.5}/CALL

TO PROVIDE ELECTRICITY TO
CRUISE SHIPS, THE PORT NEEDS

TOTAL
POWER
50MW

54,000
MWH / YEAR

TOTAL
INVESTMENT
34 M€

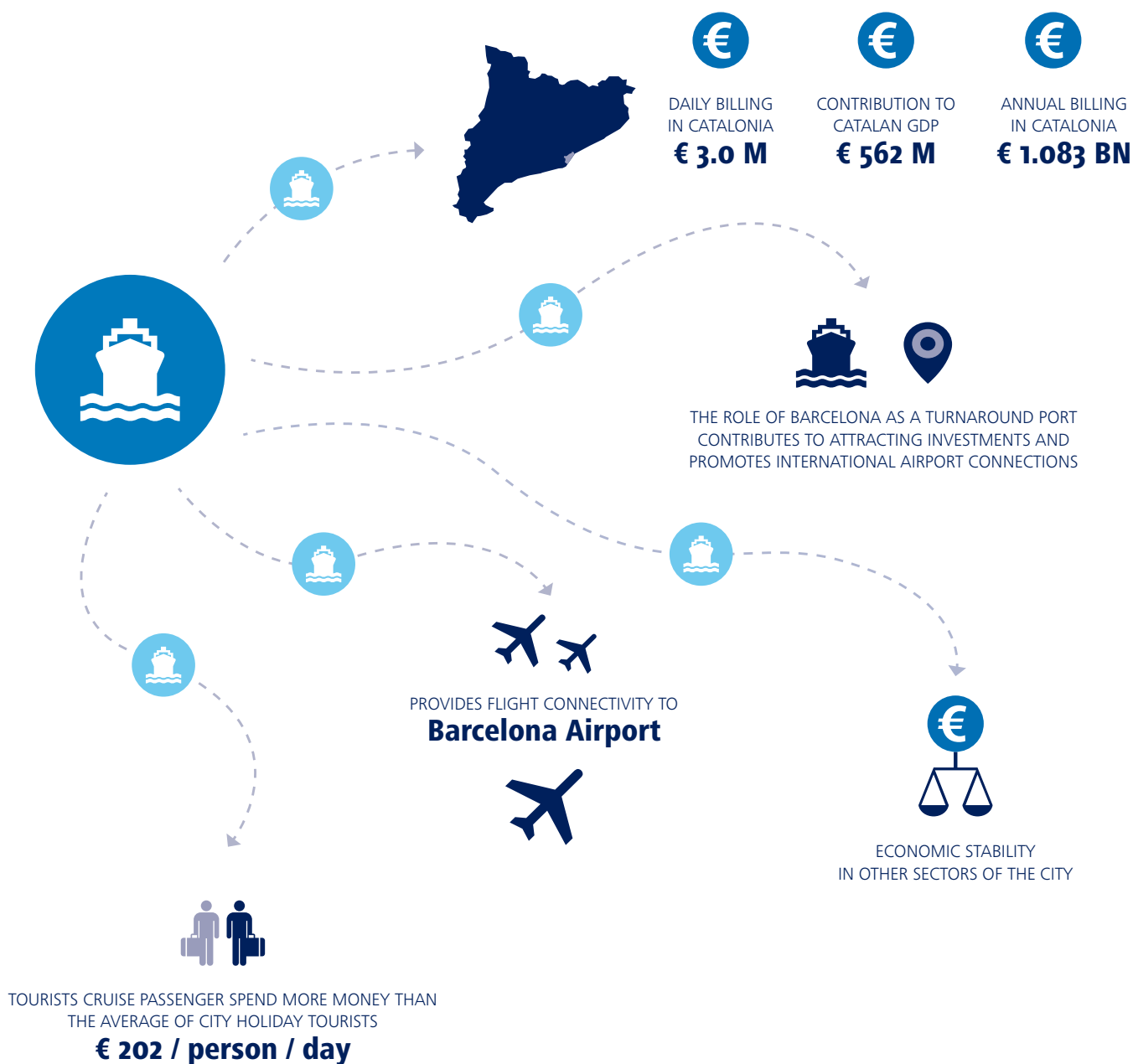




ECONOMIC SUSTAINABILITY

Port of Barcelona:
the Mediterranean turnaround
port par excellence

THE CITY OF BARCELONA RECEIVES THE MAIN ECONOMIC IMPACT OF THE CRUISE BUSINESS





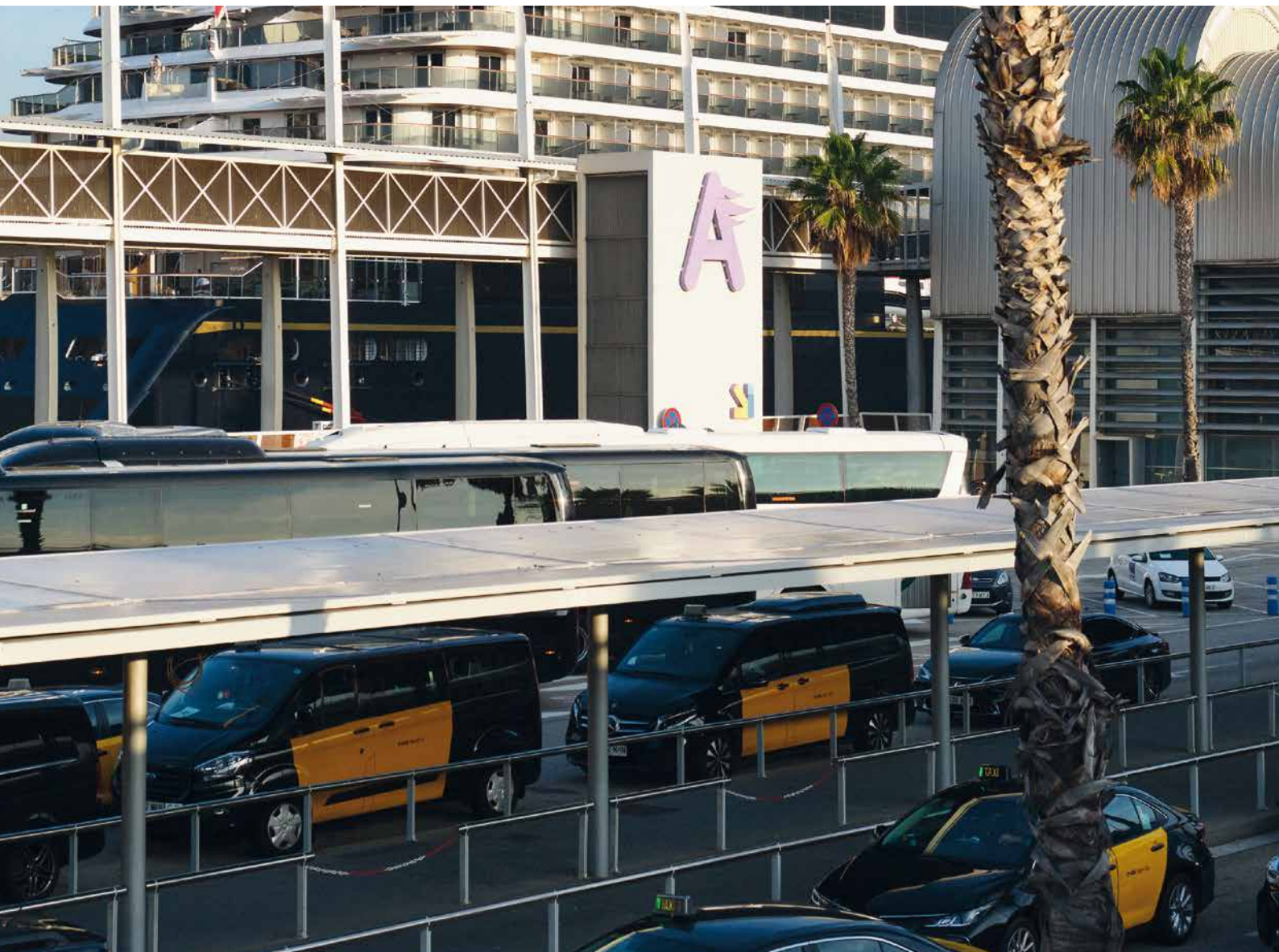


ALL TERMINALS IN
THE PORT ARE DESIGNED
UNDER THE LATEST REQUIREMENTS
CONCERNING SECURITY
COMFORT, FAST PROCESSING
AND ARCHITECTURAL IMAGE

SINCE WE HAVE 7 SPECIALIZED
CRUISE TERMINALS AND HIGHLY
TRAINED PROFESSIONALS, WE ARE
READY TO OPERATE WITH THE
HIGHEST LEVEL OF EFFICIENCY THE
LATEST GENERATION OF CRUISE SHIPS

BARCELONA CRUISE PORT- CREUERS TERMINALS OPERATES 5 PUBLIC CRUISE TERMINALS IN THE PORT OF BARCELONA, 1 TERMINAL IS IN THE WORLD TRADE CENTER, LOCATED AT WALKING DISTANCE FROM THE CITY CENTER

A CONTINUOUS PERMANENT WALKWAY CONNECTS TERMINALS A, B AND C ENABLING EASY TURNAROUND OPERATIONS OF MEGA CRUISE SHIPS





WHARF AND TERMINALS CHARACTERISTICS

	TERMINAL A	TERMINAL B	TERMINAL C	TERMINAL WTCB SOUTH
WHARF	ADOSSAT	ADOSSAT	ADOSSAT	BARCELONA
INDOOR AREA	6.500 m ²	6.500 m ²	4.100 m ²	5.000 m ²
BERTHLING LINE	305 m	318 m	367 m	350 m
SHIP LENGTH	Unlimited	Unlimited	Unlimited	253 m
DRAFT	11 m	10,2 m	11,4 m	8 m
WHARF WIDTH	22 m	22 m	23 m	14 m
WHARF HEIGHT	2,1 m	2,1 m	2,1 m	2,5 m
TURNAROUND	4.500	4.500	3.800	1.400
DISTANCE FROM THE CITY	2 km	2 km	2,5 km	400 m

GENERAL SERVICES

	TERMINAL A	TERMINAL B	TERMINAL C	TERMINAL WTCB SOUTH
POLICE - IMMIGRATION	•	•	•	•
METAL DETECTORS - X-RAY MACHINES	•	•	•	•
AIR CONDITIONING	•	•	•	•
PASSENGER GANGWAYS	•	•	•	•
LUGGAGE CONVEYORS	•	•	—	•
LUGGAGE HANDLING	•	•	•	•
LUGGAGE DELIVERY TO FINAL DESTINATION	•	•	•	•
DUTY FREE SHOPS	•	•	•	•
BAR - RESTAURANT	—	•	•	•
VENDING MACHINES	•	•	•	•
WIF-FI	•	•	•	•
VIP LOUNGE	•	•	—	—
CREW MEMBERS ROOM	—	•	—	—
SHUTTLE BUS TO CITY CENTRE	•	•	•	—
TAXI RANK	•	•	•	•

SHIP SERVICES

	TERMINAL A	TERMINAL B	TERMINAL C	TERMINAL WTCB SOUTH
FRESH WATER SUPPLY	•	•	•	•
ON-BOARD ID TELEPHONE CONNECTIONS	•	•	•	•
COMPUTER CONNECTIONS FOR IN-BOND OPERATIONS	•	•	•	•
WASTE AND GARBAGE DISPOSAL	•	•	•	•
SEWAGE DISPOSAL	•	•	•	•
RECYCLING	•	•	•	•





TERMINALS D AND E WERE THE FIRST TO BE AUTHORIZED FOR TRUCK TO SHIP (TTS) AND SHIP TO SHIP (STS) LNG OPERATIONS IN THE PORT THE BARCELONA

TERMINAL E, HELIX CRUISE CENTER, IS WHERE THE CRUISE EXPERIENCE STARTS. PROVIDING SECURITY, EFFICIENT PROCESSES AND ALL ROUND COMFORT FOR CRUISE LINES GUESTS AND CREWMEMBERS



WHARF AND TERMINALS CHARACTERISTICS

	TERMINAL D PALACRUCEROS	TERMINAL E HELIX
WHARF	ADOSSAT	ADOSSAT
INDOOR AREA	10.000 m ²	12.500 m ²
BERTHLING LINE	425 m	475 m
SHIP LENGTH	Unlimited	Unlimited
DRAFT	12,3 m	11,1 m
WHARF WIDTH	22 m	26 m
WHARF HEIGHT	2,1 m	2,1 m
TURNAROUND	4.500	6.000
DISTANCE FROM THE CITY	2,5 km	3 km

GENERAL SERVICES

	TERMINAL D PALACRUCEROS	TERMINAL E HELIX
POLICE - IMMIGRATION	•	•
METAL DETECTORS - X-RAY MACHINES	•	•
AIR CONDITIONING	•	•
PASSENGER GANGWAYS	•	•
LUGGAGE CONVEYORS	—	—
LUGGAGE HANDLING	•	•
LUGGAGE DELIVERY TO FINAL DESTINATION	•	•
DUTY FREE SHOPS	—	—
BAR - RESTAURANT	—	—
VENDING MACHINES	•	•
WI-FI	•	•
VIP LOUNGE	•	•
CREW MEMBERS ROOM	•	•
SHUTTLE BUS TO CITY CENTRE	•	•
TAXI RANK	•	•

SHIP SERVICES

	TERMINAL D PALACRUCEROS	TERMINAL E HELIX
FRESH WATER SUPPLY	•	•
ON-BOARD ID TELEPHONE CONNECTIONS	•	•
COMPUTER CONNECTIONS FOR IN-BOND OPERATIONS	•	•
WASTE AND GARBAGE DISPOSAL	•	•
LNG SUPPLY	•	•
SEWAGE DISPOSAL	•	•
RECYCLING	•	•



BARCELONA HOSTS MSC CRUISES' FIRST 100% OWNED CRUISE TERMINAL. THIS COMBINES CUTTING-EDGE DESIGN AND ADVANCED SUSTAINABILITY FEATURES TO ALIGN WITH THE COMPANY'S ENVIRONMENTAL GOALS AND ENHANCE THE PASSENGER EXPERIENCE

GOLDEN LEED CERTIFIED (GLC): A LANDMARK IN SUSTAINABLE CRUISE INFRASTRUCTURE THE NEW MSC CRUISES' TERMINAL IN BARCELONA STANDS OUT WITH ITS GLC, SETTING AN EXAMPLE IN ENVIRONMENTAL RESPONSIBILITY



WHARF AND TERMINALS CHARACTERISTICS

	TERMINAL H MSC
WHARF	ADOSSAT
INDOOR AREA	11.500 m ²
BERTHING LINE	400 m
SHIP LENGTH	362 m
DRAFT	11,5 m
WHARF WIDTH	30 m
WHARF HEIGHT	2,5 m
TURNAROUND	6.500
DISTANCE FROM THE CITY	3,9 km

GENERAL SERVICES

	TERMINAL H MSC
POLICE - IMMIGRATION	•
METAL DETECTORS - X-RAY MACHINES	•
AIR CONDITIONING	•
PASSENGER GANGWAYS	•
LUGGAGE CONVEYORS	–
LUGGAGE HANDLING	•
LUGGAGE DELIVERY TO FINAL DESTINATION	•
DUTY FREE SHOPS	–
BAR - RESTAURANT	–
VENDING MACHINES	•
WI-FI	•
VIP LOUNGE	•
CREW MEMBERS ROOM	•
SHUTTLE BUS TO CITY CENTRE	•
TAXI RANK	•

SHIP SERVICES

	TERMINAL H MSC
FRESH WATER SUPPLY	•
ON-BOARD ID TELEPHONE CONNECTIONS	–
COMPUTER CONNECTIONS FOR IN-BOND OPERATIONS	•
WASTE AND GARBAGE DISPOSAL	•
LNG SUPPLY	•
SEWAGE DISPOSAL	•
RECYCLING	•



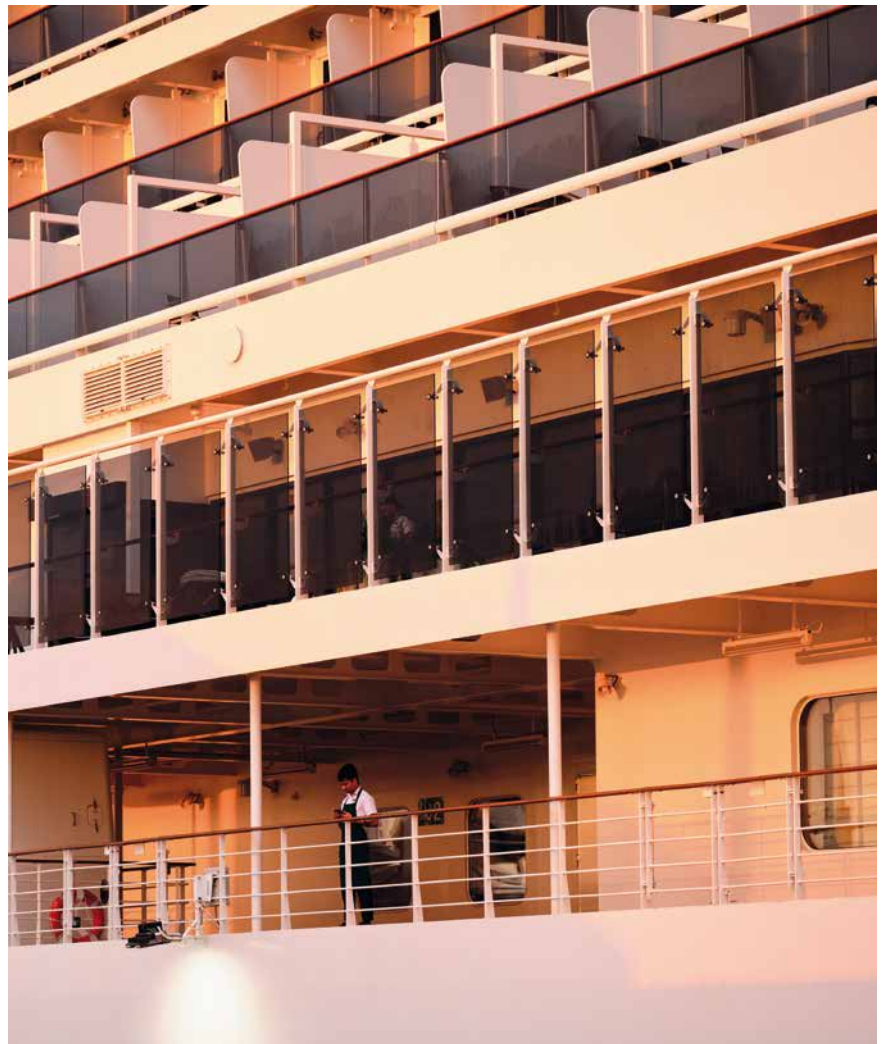
NORWEGIAN VIVA
NASSAU

37





FROM STATE-OF-THE-ART TERMINAL
FACILITIES TO EFFICIENT LOGISTICS
AND PASSENGER HANDLING,
WE ENSURE EVERY ASPECT OF YOUR VISIT
IS MANAGED WITH PRECISION AND CARE



SAFETY AND SECURITY ARE
OF THE UTMOST IMPORTANCE
FOR THE PORT OF BARCELONA.
OUR TERMINALS FULLY COMPLY
WITH IMO & EU REQUIREMENTS





UNIDAD CANINA
K-9

Airport





NORWEGIAN VIVA
NASSAU



JT BARCELONA-EL PRAT AIRPORT IS A MODERN AND FUNCTIONAL SPACE
WITH TWO PASSENGER TERMINALS

HUGE POTENTIAL FOR GROWTH IN INTERCONTINENTAL ROUTES THROUGH
COLLABORATION BETWEEN BARCELONA AIRPORT, PORT OF BARCELONA,
BARCELONA ROUTE DEVELOPMENT COMMITTEE (BARDC) AND TOURISM
AUTHORITIES

PASSENGERS

55.03 million

TOTAL PAX

+10.3% (VS 2023)

40.80 million

INTERCONTINENTAL PAX

+12.5% (VS 2023)

AIRLINES

+80

AIRLINES

DESTINATIONS

+200

DESTINATIONS

+150

EUROPEAN DESTINATIONS

54

INTERCONTINENTAL DESTINATIONS

DIRECT FLIGHTS TO MAIN INTERNATIONAL AIRPORTS

NORTH AMERICA

DEPARTURE	DESTINATION	AIRLINE
BARCELONA	ATLANTA	DELTA
BARCELONA	BOSTON	LEVEL
BARCELONA	CALGARY	WESTJET
BARCELONA	CHICAGO	AMERICAN AIRLINES / UNITED
BARCELONA	DALLAS	AMERICAN AIRLINES
BARCELONA	FILADELFIA	AMERICAN AIRLINES
BARCELONA	LOS ÁNGELES	LEVEL
BARCELONA	MIAMI	AMERICAN AIRLINES / LEVEL
BARCELONA	MONTREAL	AIR CANADA / AIR TRANSAT
BARCELONA	NUEVA YORK (EWR)	UNITED
BARCELONA	NUEVA YORK (JFK)	DELTA / AMERICAN AIRLINES / LEVEL
BARCELONA	SAN FRANCISCO	LEVEL / UNITED
BARCELONA	TORONTO	AIR CANADA / AIR TRANSAT
BARCELONA	WASHINGTON	UNITED

SOUTH AMERICA

DEPARTURE	DESTINATION	AIRLINE
BARCELONA	BOGOTÁ	AVIANCA
BARCELONA	BUENOS AIRES (EZE)	LEVEL
BARCELONA	CANCÚN	EVELOP
BARCELONA	HONDURAS	EVELOP
BARCELONA	MÉXICO	EMIRATES
BARCELONA	PUNTA CANA	LEVEL / EVELOP
BARCELONA	SANTIAGO DE CHILE	LEVEL
BARCELONA	SAO PAULO (GRU)	LATAM LINHAS AEREAS

MIDDLE EAST

DEPARTURE	DESTINATION	AIRLINE
BARCELONA	ABU DABI	ETIHAD
BARCELONA	AMMAN	ROYAL JORDANIAN / VUELING
BARCELONA	DUBAI	EMIRATES
BARCELONA	JEDDAH	SAUDI ARABIAN
BARCELONA	KUWAIT	KUWAIT AIRWAYS
BARCELONA	QATAR	QATAR AIRWAYS
BARCELONA	RIYADH	SAUDI ARABIAN
BARCELONA	TEL AVIV	EL AL / VUELING / ARKIA ISRAELI AIRLINES / BLUE BIRD

Barcelona
AIRPORT

13km

DISTANCE FROM THE CITY



TRANSPORT LINKS



BARCELONA CRUISE PORT - CREUERS TERMINALS

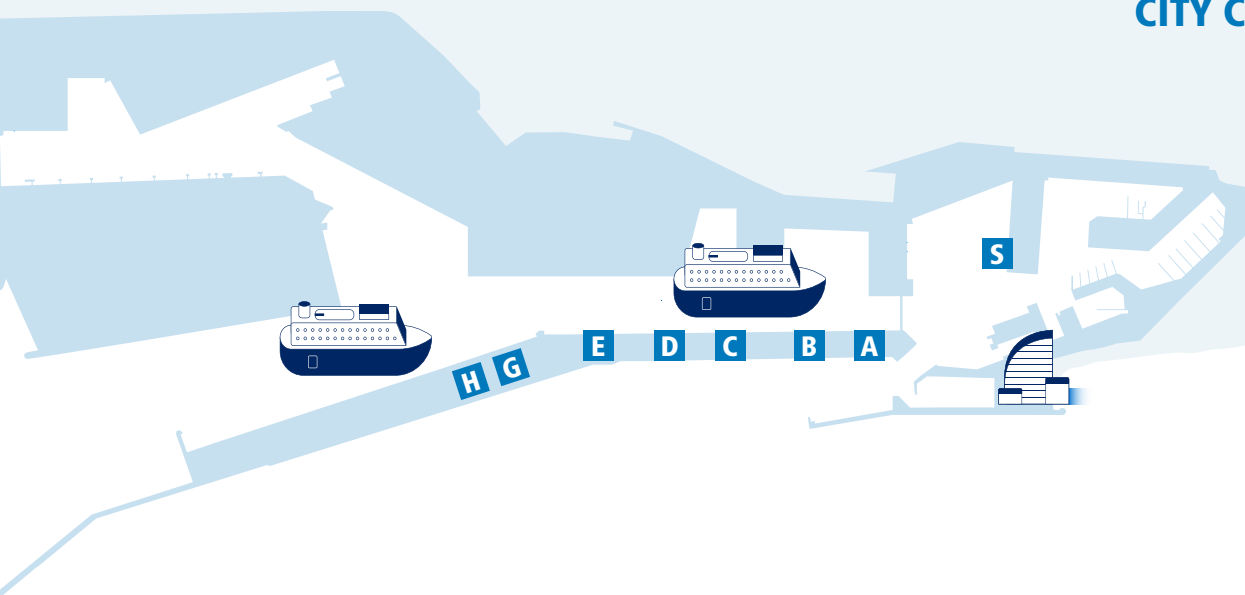


BARCELONA CRUISE PORT - CREUERS TERMINALS



BARCELONA CRUISE PORT - CREUERS TERMINALS

Barcelona CITY CENTER



TERMINALS

A • B • C • D PALACRUCEROS • **E** HELIX • **G • H • S** WTC



BCT - BARCELONA CRUISE TERMINAL



BCT - BARCELONA CRUISE TERMINAL



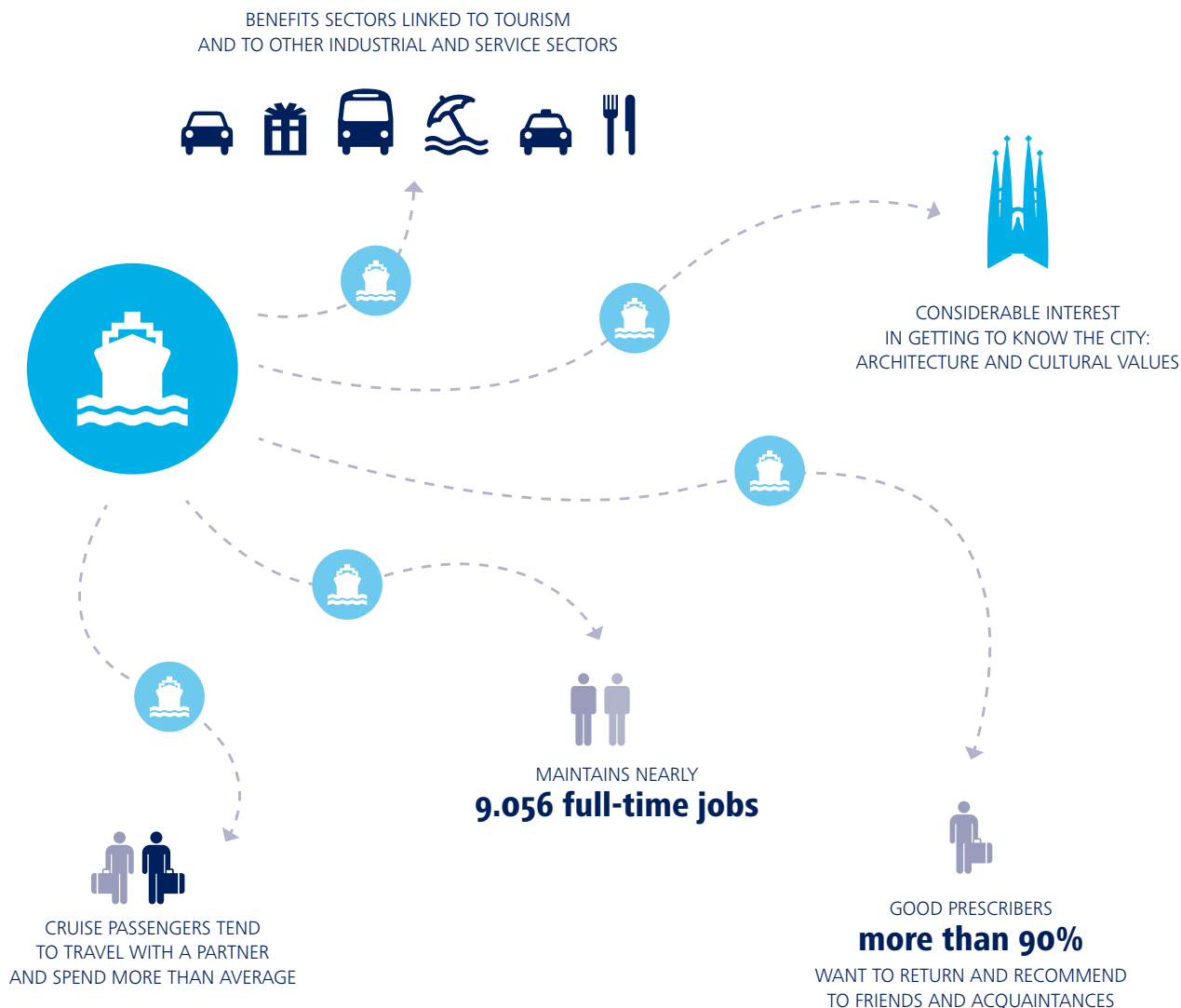
MSC CRUISES BARCELONA TERMINAL SLU





SOCIAL SUSTAINABILITY

Coordination among
the city and the country:
Barcelona Tourism
Board and Catalonia
Tourist Board



THE CRUISE BUSINESS IN CATALONIA
GENERATES MORE THAN 9.000 FULL-TIME
JOBS, INCLUDING SECTORS NOT INVOLVED
IN TOURIST ACTIVITIES

Barcelona





Barcelona in figures



www.barcelonaismuchmore.com

KEYS FIGURES

1.64 million

INHABITANTS

18.2 °C

AVERAGE TEMPERATURE
MILD CLIMATE ALL YEAR ROUND

75.6 Km

OF BEACHES

RANKING AS A TOURIST DESTINATION

1st

SOUTHERN EUROPEAN CITY WITH THE
BEST FUTURE PROSPECTS 2023 (FDI)

3rd

FAVOURITE EUROPEAN CITY FOR
ESTABLISHING A START-UP

4th

MOST INNOVATIVE CITY IN EUROPE
(INNOVATION CITIES INDEX 2023)

ACCOMMODATION

890 HOTELS - **144,580** BEDS • **21,960** HOMES FOR TOURIST USE - **123,300** BEDS

COMMUNICATIONS AND TRANSPORT LINKS

+70

AIRLINES

+150

DESTINATIONS

45

INTERCONTINENTAL DESTINATIONS

9

HIGH SPEED INTERNATIONAL TRAIN
DESTINATIONS

CULTURE AND LEISURE

76

MUSEUMS AND CULTURAL CENTERS

189

FESTIVALS

3

BIG AUDITORIUMS

9

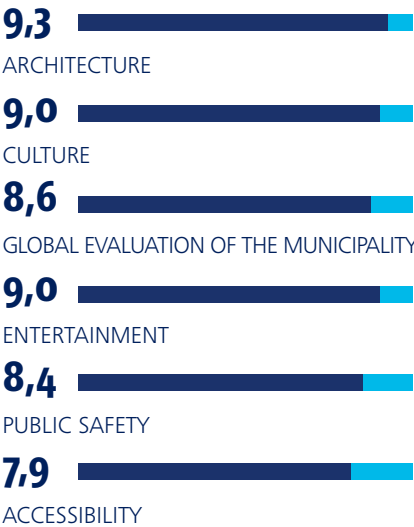
UNESCO WORLD HERITAGE SITES

3

UNESCO INTANGIBLE CULTURAL
HERITAGE

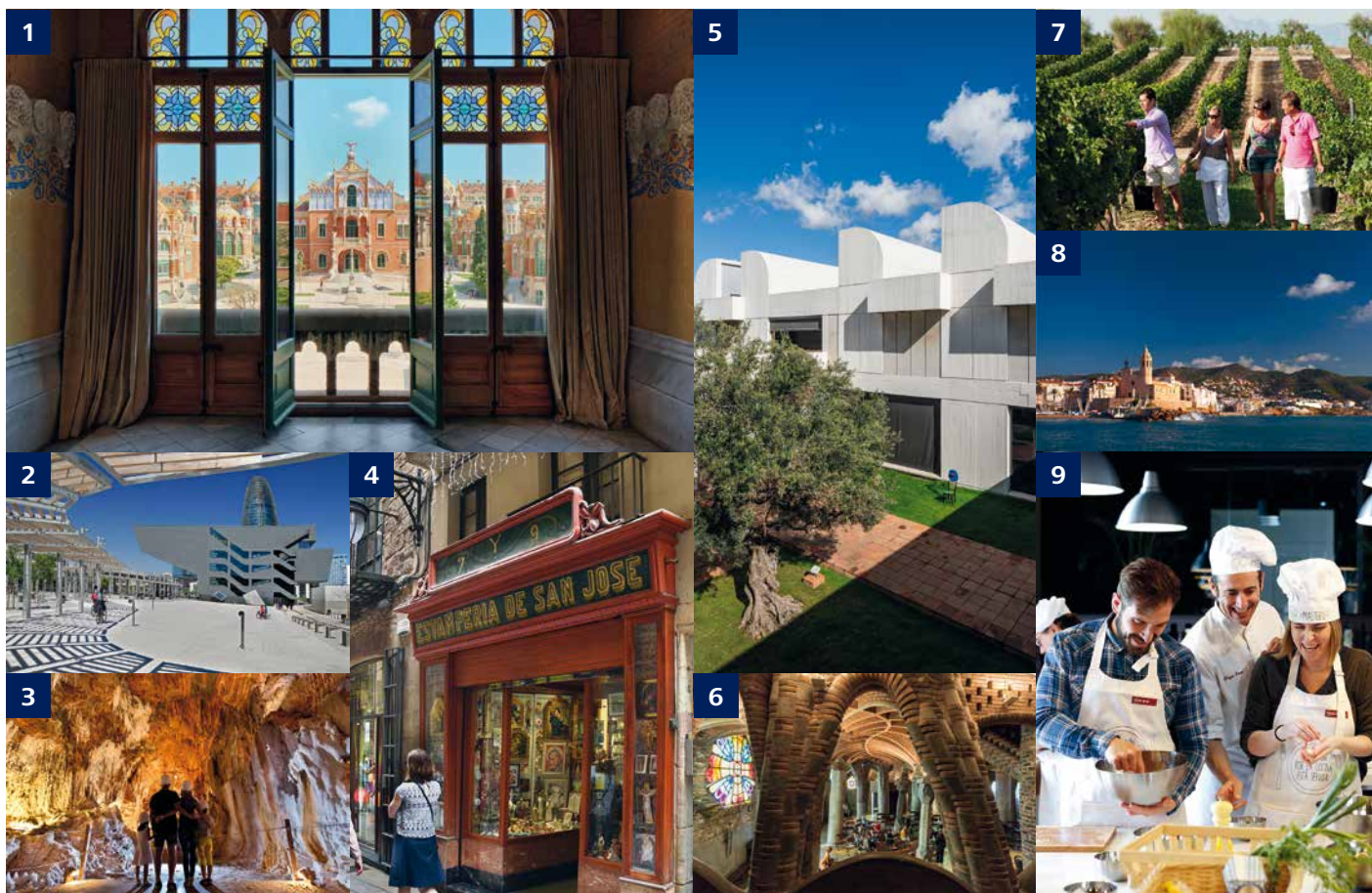
TOURIST OPINION RATING

SOURCE: Observatori del Turisme a Barcelona: ciutat i regió 2023.
www.observatorituristicbarcelona/en



BARCELONA IS ONE OF THE 10 CITIES IN THE WORLD WHICH MUST BE VISITED ONCE IN A LIFETIME

NATIONAL GEOGRAPHIC MAGAZINE



IMAGES: 1, 2, 4, 7, 8, 9 © Turisme de Barcelona / 3 © Oscar Rodbag Fund-Cardona Històrica / 5 © Fundació Joan Miró / 6 © Albert Miró- DiBa

1. UNIQUE ARCHITECTURE – 2000 years of heritage – **2. 22@** – Historic industrial and residential district transformed into a knowledge and innovation hub – **3. CARDONA** – Medieval castle and tradition, the Salt Mountain Cultural Park – **4. PERSONAL SHOPPERS TOURS** – A variety of local shops and global brands – **5. FUNDACIÓ JOAN MIRÓ** – Modern art in harmony with architecture – **6. COLONIA GÜELL** – A modernist textile colony and Gaudí's Crypt, his best kept secret – **7. WINE REGION**, with more than 300 wineries – **8. SITGES** – The perfect combination of Modernism and bohemian life, just minutes away from Barcelona on the shores of the Mediterranean – **9. CULINARY AND COOKING EXPERIENCES** – Discover Catalan gastronomy and become a true chef.

Catalonia





Catalonia in figures



www.catalunya.com

KEYS FIGURES

44
WORLD HERITAGE SITES

400
MUSEUMS AND ART GALLERIES

62
MICHELIN STARS RESTAURANTS

12
DENOMINATIONS OF ORIGIN
OF WINE AND CAVA

4
INTERNATIONAL AIRPORTS

5,000 km
OF ROADS AND
LONG-DISTANCE TRAILS

4,000
LOCAL TRAILS

580 km
OF MEDITERRANEAN COAST

54
PORTS AND YACHT CLUBS

More than 30%
OF PROTECTED TERRITORY

20
PARKS AND NATURAL SPACES

**Responsible Tourism
Biosphere Certification**

CATALONIA IS A MEDITERRANEAN DESTINATION
WITH AN ANCIENT HISTORY, CULTURE,
GASTRONOMY AND NATURE. DISCOVER IT:
FAMILY, SPORTS AND BUSINESS TOURISM



© Agència Catalana de Turisme

Barcelona is the capital of Catalonia. The land of Miró and Dalí. A land with a Mediterranean tradition and a rich historical heritage. The modernist art of Gaudí and Domènech i Montaner, Poblet Monastery, the Romanesque churches of the Boí Valley, and the Roman archaeological site of Tarragona have all been declared World Heritage Sites by UNESCO. A land of history and art, Mediterranean atmosphere, refined cuisine, and pleasant climate are also appealing to visitors.

The National Commitment for Responsible Tourism is the tool that allows the Catalan government to implement a model that is environmentally responsible, socially fair, territorially balanced, and reconnected with the country's identity elements. On this path, the Catalan tourism sector sets itself the following objectives: the fight against climate change, the preservation of biodiversity, universal access to destinations, the improvement of the quality of employment, and the decarbonisation of the employment economy.

In 2025, Catalonia celebrates being recognized as the World Region of Gastronomy. As the first European region to receive this distinction, this recognition reaffirms the consolidation of an innovative and regenerative tourism model, where Catalonia's gastronomic revolution has gone beyond restaurants and opened the doors to discovering the region and its local and unique food production.



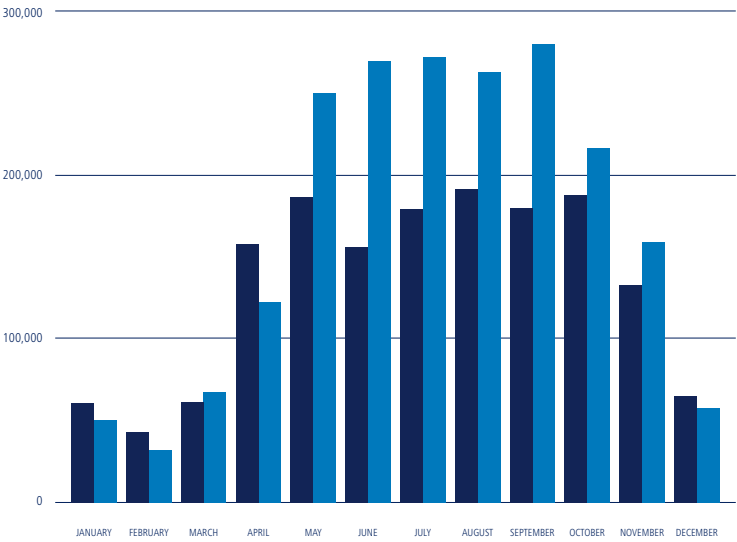




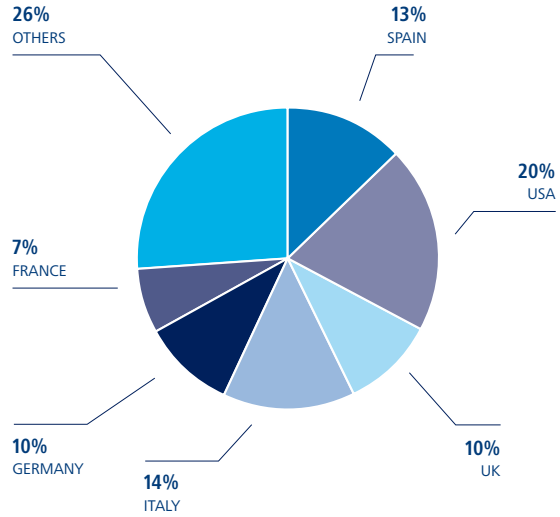
OPERATIONS 2024

	CALLS	EMBARKING	DISEMBARKING	TRANSIT	TOTAL PAX
JANUARY	25	22,156	28,294	60,586	111,036
FEBRUARY	14	18,325	13,459	43,155	74,939
MARCH	27	34,408	33,284	61,656	129,348
APRIL	79	62,761	60,297	158,666	281,724
MAY	103	125,817	125,557	187,035	438,409
JUNE	75	138,385	132,306	156,549	427,240
JULY	75	137,695	135,455	179,996	453,146
AUGUST	80	130,950	133,054	192,214	456,218
SEPTEMBER	95	134,506	146,549	180,269	461,324
OCTOBER	103	110,169	107,345	188,676	406,190
NOVEMBER	82	82,488	77,406	133,567	293,461
DECEMBER	33	30,119	27,641	65,186	122,946
TOTAL	791	1,027,779	1.020.647	1,607,555	3,655,981

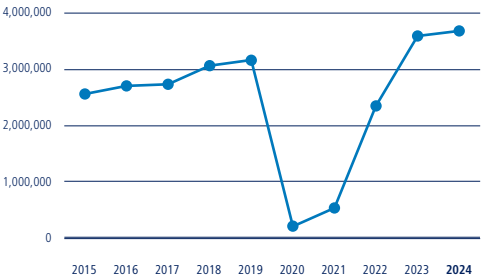
PASSENGERS 2024 / • Transit • Turnaround



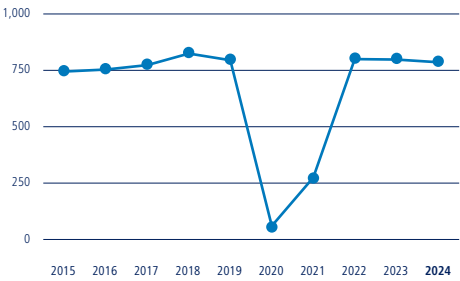
CRUISE PASSENGER NATIONALITIES 2024



CHANGE IN PASSENGER NUMBERS (2015 - 2024)



CHANGE IN CALL NUMBERS (2015 - 2024)



TERMINAL OPERATORS

BARCELONA CRUISE PORT - CREUERS TERMINALS

Estació Marítima Sud. Edifici WTC Barcelona
Moll de Barcelona, s/n. 08039 Barcelona
T +34 93 412 79 14 / F +34 93 317 31 69
contact@bcncruiseport.com
www.bcncruiseport.com

BARCELONA CRUISE TERMINAL

Terminal E, HELIX
Moll Adossat, s/n. 08039 Barcelona
T +34 93 225 62 98
yunta@es.costa.it

MSC CRUISES BARCELONA TERMINAL SLU

Moll d'Adossat, 08039 Barcelona
T +34.672.41.03.26
sandra.yunta@msccruceros.es

CRUISE AGENTS

BALEARES CONSIGNATARIOS, SL

Via Laietana, 15, ppal 1-2, 08003 Barcelona
T +34 93 319 63 18 - F +34 93 319 01 09
barcelona@bcagency.net
www.bcagency.net

GLOBAL PORTS HOLDING PLC

Estació Marítima Sud. Edifici WTC Barcelona
Moll de Barcelona, s/n. 08039 Barcelona
T +34 93 442 21 53
operationsbcn@globalportsholding.com
www.bcncruiseport.com

INTERCRUISES

Diputació, 238, 3º, 08007 Barcelona
T +34 93 297 29 00
i.intercruises@intercruises.com
www.intercruises.com

LANTIMAR

Porto Pi 8, 3A-B, 07015 Palma de Mallorca
T +34 97 140 55 62
info@lantimaryatching.com
refit@lantimaryatching.com
www.lantimar.com

MARMEDSA CRUISE SERVICES

Pº de la Zona Franca, 111 Torre Auditori - 08038 Barcelona
T +34 93 298 77 77
cruises@marmedsa.com
www.marmedsacruiseservices.com

MEDITERRANEAN SHIPPING CRUISES

Foc, 30-36, 08038 Barcelona
T +34 93 508 23 00
es048-bcnpax@msc.com
www.msccruises.com

OCEAN PORTS SHIPPING (OPS)

Edifici Nord WTC Barcelona, planta 2
Moll de Barcelona s/n, 08039 Barcelona
www.oceanportshipping.com

PÉREZ & CÍA

Mallorca, 260, L'Eixample, 08008 Barcelona
T +34 93 443 79 00
cruisesandyachts@cruises.perezycia.com
www.perezycia.com

TRANSCOMA CRUISE & TRAVEL, SL

Atlàntic, 112-120 (ZAL), 08040 Barcelona
T +34 93 344 25 00
barcelona@transcomacruises.com
www.transcomacruises.com

CRUISE LINES

- | | | | |
|-----------------------------------|----------------------------------|---------------------------------|-------------------------------------|
| • AIDA CRUISES | • DISNEY CRUISE LINE | • MSC CRUISES, SA | • SEADREAM YATCH CLUB |
| • AZAMARA CRUISES | • EMERALD YACHT CRUISES | • NORWEGIAN CRUISE LINE | • SILVERSEA CRUISES |
| • BALANDA MARITIME COMPANY | • FRED OLSEN CRUISE | • OCEANIA CRUISES | • THE RITZ-CARLTON YACHT COLLECTION |
| • BERNHARD SHULTE SHIP MANAGEMENT | • FTI CRUISES HELLAS LTD. | • P&O CRUISES | • TUI CRUISES GMBH |
| • CARNIVAL CRUISE LINES | • GLOBAL CRUISE LINES LTD. | • PRINCESS CRUISES | • TUI UK LTD. |
| • CELEBRITY CRUISES | • GRAND CIRCLE CRUISE LINE D.O.O | • REGENT SEVEN SEAS CRUISES INC | • V SHIPS LEISURE SAM |
| • CIE. DES ILES DU PONANT | • HAPAG-LLOYD CRUISESHIP | • RESIDENTSEA | • VIKING OCEAN CRUISES SHIP |
| • COSTA CROCIERE, SPA | • HOLLAND AMERICA LINE | • ROYAL CARIBBEAN CRUISES LTD. | • VIRGIN VOYAGES |
| • CRYSTAL CRUISES INC. | • MAJESTIC | • SEA CLOUD CRUISES | • WINDSTAR SAIL CRUISE LTD. |
| • CUNARD LINE | • MYSTIC CRUISES, SL | • SEABOURN CRUISES LINE LTD. | |



Port de Barcelona

www.portdebarcelona.cat

WTC Barcelona, edifici Est
Moll de Barcelona, s/n
08039 Barcelona
T 93 298 21 00